

Dilute the Bubble Solution



How to Use the Bubble Concentrate:

- 1 Prepare the bubble concentrate, clean water, and a bottle.
- 2 Pour **two packs** of concentrate into the bottle and add water.
- 3 Shake well to mix evenly.

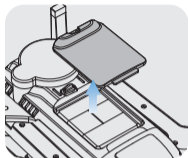
- 💡 Use at least two packs of bubble concentrate each time. For more bubbles, increase the amount of concentrate.
- Low-concentration bubble solution may result in poor bubble performance. This is not a drone malfunction. Ensure that any third-party solution meets the required concentration.
- A slight delay after activating the bubble function is normal.
- Wipe off any remaining bubble solution from the device after use.
- If not in use for an extended period, empty the container and keep the device dry.

- ⚠️ Avoid direct contact of bubble solution with eyes or mouth. If contact occurs, rinse immediately with clean water and seek medical attention.
- Avoid prolonged skin contact. Rinse thoroughly with clean water after use.
- DO NOT treat the bubble solution as food or drink to prevent confusion or accidental ingestion.
- DO NOT turn the drone upside down to prevent the solution from flowing into the device.

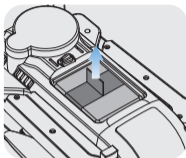
Filling Bubble Solution



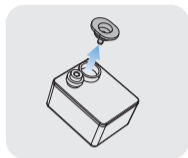
1. Turn the latch clockwise to unlock it.



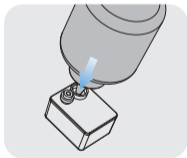
2. Remove the outer cover of the bubble solution container.



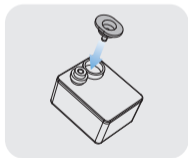
3. Pull the strap to lift out the container.



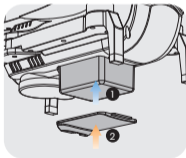
4. Take off the cap from the container.



5. Carefully pour in the bubble solution—don't overflow.



6. Secure the cap back on, making sure it's tightly sealed.



7. Keeping the drone body level, insert the container **from the bottom up**. Put the outer cover back on.



8. Turn the latch counterclockwise to lock everything into place.